



OAKFIELD



Snatts Road, Uckfield

Price Guide £1,200,000



4



2



3



C

SUMMARY





Kitchen/Breakfast Room

16'1 x 13'2

Dining Room

16'2 x 12'11

Sitting Room

23'4 x 21'2

Study

11'5 x 11'0

Bedroom

21'2 x 15'4

Bedroom

16'2 x 11'8

Bedroom

12'3 x 12'3

Mezzanine

18'2 x 7'5

Garage

24'3 x 17'2

Store

11'10 x 5'11

Council Tax Band - G £4,347 per annum















INFORMATION

Tenure

Freehold

Local Authority

Wealden District Council

Council Tax Band

G

Opening Hours

| | |
|------------------|-----------------|
| Monday to Friday | 9.00am - 5.30pm |
| Saturday | 9.00am - 4.00pm |

Viewings

Please contact us on 01825 762132 if you wish to arrange a viewing appointment for this property or require further information.

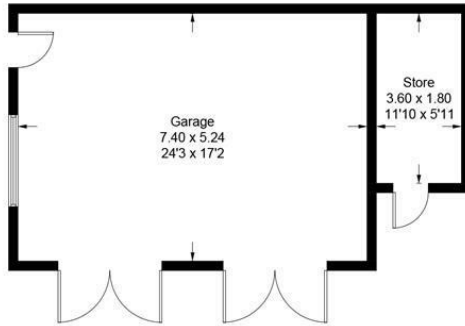
Area Map



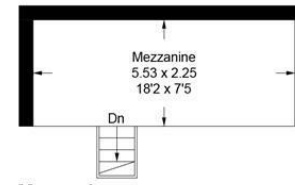
Floorplan

Snatts Road, Uckfield, TN22 2AP

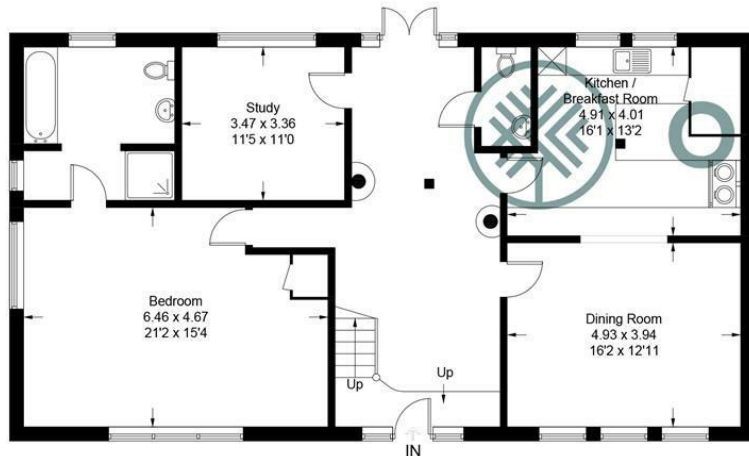
Approximate Gross Internal Area = 222.5 sq m / 2395 sq ft
 Mezzanine = 12.5 sq m / 134 sq ft
 Garage / Store = 46.0 sq m / 495 sq ft
 Total = 281.0 sq m / 3024 sq ft
 (Excluding Voids)



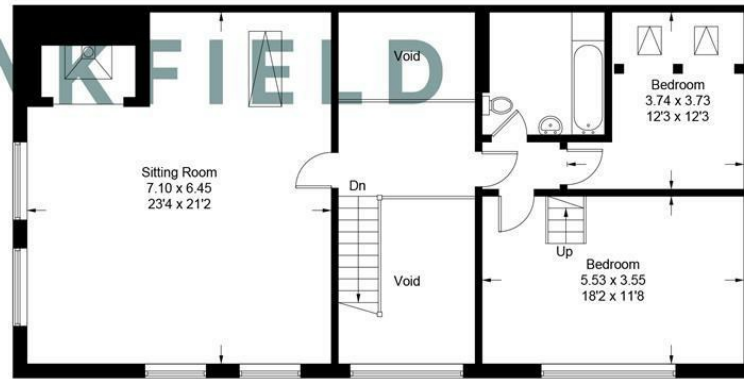
(Not Shown In Actual Location / Orientation)



Mezzanine



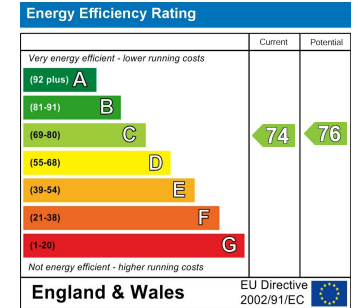
Ground Floor



First Floor

Illustration for identification purposes only, measurements are approximate, not to scale.
 Imageplansurveys @ 2025

Energy Efficiency Graph



These particulars, whilst believed to be accurate are set out as a general outline only for guidance and do not constitute any part of an offer or contract. Intending purchasers should not rely on them as statements of representation of fact, but must satisfy themselves by inspection or otherwise as to their accuracy. No person in this firm's employment has the authority to make or give any representation or warranty in respect of the property.